

# Scottish autism

WHERE AUTISTIC PEOPLE  
ARE VALUED

# Scottish autism

WHERE AUTISTIC PEOPLE  
ARE VALUED



CONTACT  
US

New Struan Day and Residential School, 100 Smithfield Loan, Alloa, FK10 1NP



/StruanSchool



@ScottishAutism

[www.scottishautism.org/new-struan-school/](http://www.scottishautism.org/new-struan-school/)

## newstruan school

PROSPECTUS

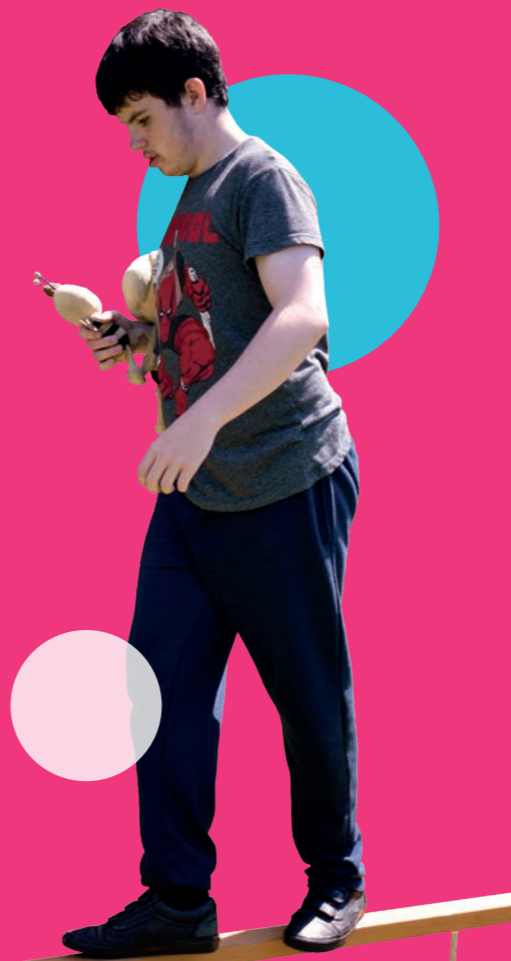
## INTRODUCTION

New Struan School is an independent day and residential school for autistic children and young people. Part of Scotland's national charity, Scottish Autism, we have been leading the way in the delivery of specialist education for autistic children and young people for over 35 years.

We welcome pupils between the ages of 5 and 19 years from across the United Kingdom and our personalised support packages can include weekends and holidays covering 52 weeks of the year.

Every child and young person is unique and this is no more apparent than when looking at the diverse community at our school. Whatever a young person's social or sensory needs, we provide a flexible and highly personalised approach.

Our school vision, 'to enable our pupils to become included, confident learners in the community' is at the heart of everything we do. Through our Values Charter, Curriculum approach and positive ethos we strive to provide the structured and supportive environment which enables each and every one of our pupils to reach their full potential.



## OUR VALUES – FLOURISH. HAPPINESS. PRIDE & TRUST.

Our values charter underpins everything that happens at the school. It was developed in collaboration with pupils and staff after we asked them to consider what is important to them. This feedback was collated and narrowed down into our charter.

**Relationships:** We have a right to feel safe, happy, respected and included.

We have a shared responsibility to:

- Resolve problems constructively and calmly
- Understand and celebrate differences
- Show positivity, kindness and be gentle

**Potential:** We have a right to purposeful learning and experiences that enable us to feel engaged and confident.

We have a shared responsibility to:

- Try new opportunities and be curious
- Help, support and encourage others
- Be creative

**Environment:** We have a right to a clear, structured and calm environment with motivating resources that develop our talents and interests.

We have a shared responsibility to:

- Be aware of our self and mindful of our presence
- Look after our shared spaces and resources
- Always have high expectations

Through our charter we have developed three core school rules to help pupils of all cognitive abilities to understand the high expectations we have here at New Struan School;

Be Safe

Be kind and respectful

Always try your best

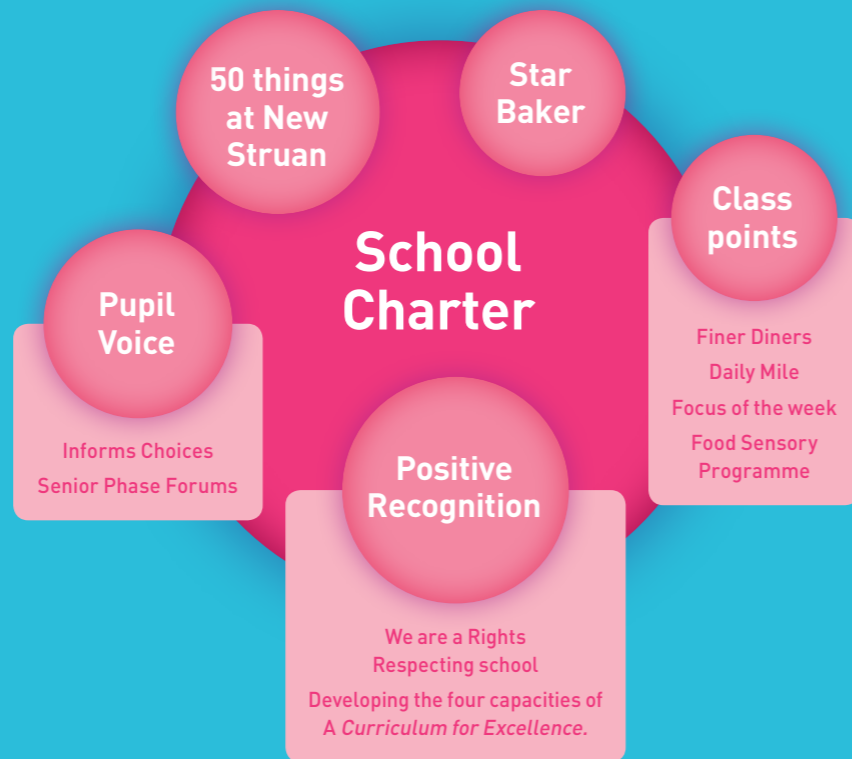
# CURRICULUM

New Struan School embraces the aims and objectives of the Curriculum for Excellence which offers a wide range of learning opportunities. Our objective is to set appropriate and challenging learning outcomes for each young person to enable them to make progress.

Whilst elements of the curriculum will be common to all, how it is taught and communicated is personalised and purposeful to meet individual needs and forms their own individual education plan. Key to this is to build on the young person's strengths and motivations in order to engage them in the learning process. We regularly undertake school wide topics, making links across areas of learning and bringing the pupils together in group working initiatives. Learning also takes place out with the classroom in social and community settings. We have worked hard to establish positive links with community organisations and other local education establishments. Our pupils are offered a range of experiences at local horticultural centres, farms and horse riding centres to enrich their learning experiences. We run Rebound Therapy and Sensory Circuit Sessions to support our pupils readiness to learn.

## Developing Responsible Citizens:

Promoting Positive Choices  
and Celebrating Personal Achievement



## • Participation

Including the pupils in the decisions that affect them is integral to our approach. We encourage and facilitate each pupil to have a voice and be confident in communicating their needs and preferences through initiatives such as our Pupil voice group.

We see our pupils confidently expressing their views on their school and their learning every day and making choices for themselves.

## • Partnership working

We work closely with parents, families and local authority partners to ensure a consistent approach to supporting the young person and encourage the sharing of knowledge and ideas. At New Struan School we provide speech and language therapy, occupational therapy, music therapy and counselling psychology to support our pupils, where it is needed.

## • Reflective practice

Every individual with autism is unique. We constantly undertake a cycle of observation, assessment and review for each young person to create a Personalised Education Plan which is relevant and meaningful to them.

It is important to recognise when the structure for a young person needs to change. This enables independence and self-help skills to be developed.



## WELLBEING MODEL

Across Scottish Autism, our approach to practice focuses on the wellbeing and happiness of the individuals we support. Stress Reduction activities at the School help to aid wellbeing and reduce anxiety, providing new activities that enhances the pupils learning experience and provides them some quiet time to relax.



## OUR ETHOS

Getting it Right for Every Child (GIRFEC) is a national approach in Scotland to improving outcomes and supporting the wellbeing of our children and young people by offering the right help at the right time for the right people. GIRFEC outlines that children and young people should be given a voice in decisions that affect them.

At New Struan School we are committed to supporting our learners to independently make decisions and express their opinions in a total communication environment. We ensure that our pupils are involved in the progress of their own learning journey. We celebrate pupil voice in a variety of styles adapting to the communication profile of our individual learners which is shaped in collaboration with our Speech and Language Therapists.



## STAFF TEAM

We have small class sizes of no more than six pupils per group. They are supported by a class teacher and a team of classroom assistants. The pupils are grouped based on their communication and developmental levels rather than their chronological age and stage.



### QUOTES FROM PUPILS

***“For the first time, in my honest opinion, I actually feel included, I feel more confident, I feel more... less vulnerable.”***

Jack



***“It’s the best school I have been to, its changed my life, changed my parents’ life. Its changed all my family life, and you know, just made me a much much better person.”***

Jason



### QUOTE FROM PARENT

***“Three years Jack has been at New Struan School, and what a difference this has made to his confidence and well-being.”***

Jacks Dad

